



ourplace

Partner Package

Our Place Society is dedicated to serving the most vulnerable members of our community by providing 1400 meals a day, 500 units of supportive housing, emergency shelter, health, hygiene, addiction recovery supports, and so much more.

Over the past months, Our Place has expanded its shelter and recovery programs while also seeing a **28% increase in food costs** and a **25% rise in demand for community meals**. Funds raised through our Corporate Partnerships will be instrumental in helping meet these growing needs and ensuring that individuals continue to receive essential supports.

Partnering with Our Place demonstrates your company's commitment to **social responsibility** and helps address **housing instability, food insecurity, and poverty in Greater Victoria**.

We invite you to partner with us through:
Corporate Donations, Event Sponsorship,
Meal Sponsorship, Marketing Promotions,
Third-Party Fundraisers, and Employee Matched Giving.



Our Place service users (our family members) regularly stabilize, return to work, and give back to the community after accessing our shelter, meals, medical, addiction recovery, and employment supports.



10th annual Hungry Hearts Gala



The Neal Estate Group Sponsor & serve a meal together



Supporter Levels

Based on lifetime support

Community Champion – \$100,000+

- Prominent recognition on Our Place Society's website, newsletter, and annual report.
- Exclusive invitation to tour Our Place facilities and to meet program participants.
- Opportunity for featured logo placement on site at key Our Place locations.
- Priority sponsorship opportunities for special events.
- Media coverage opportunities.
- Social media acknowledgment.
- Our Place Community Champion Badge.

Community Leader – \$50,000+

- Prominent recognition on Our Place Society's website, newsletter, and annual report.
- Priority sponsorship opportunities for special events.
- Media coverage opportunities.
- Social media acknowledgment.
- Our Place Community Leader Badge.

Community Builder – \$30,000+

- Recognition on Our Place Society's website and in the newsletter.
- Priority sponsorship opportunities for special events.
- Social media acknowledgment.
- Our Place Community Builder Badge.

Custom Partnership Opportunities

Tailored opportunities include:

Event Sponsorships: Fund and co-brand meaningful events such as community dinners, exclusive VIP events, awareness campaigns, or holiday celebrations.

Employee Engagement: Coordinate corporate volunteer days for your team to participate in meaningful activities at Our Place Society.

Strategic Partnership opportunities with Times Colonist, Page One Publishing, High Rise Ads, and more.

Community Creator – \$20,000+

- Recognition on Our Place Society's website.
- Mention in the annual report.
- Our Place Community Creator Badge.
- Invitation to exclusive Our Place events.

Community Supporter – \$10,000+

- Recognition on Our Place Society's website
- Our Place Community Supporter Badge.
- Invitation to exclusive Our Place events.

Annual Supporter

Pledge \$2,000+ in support in 2025/2026

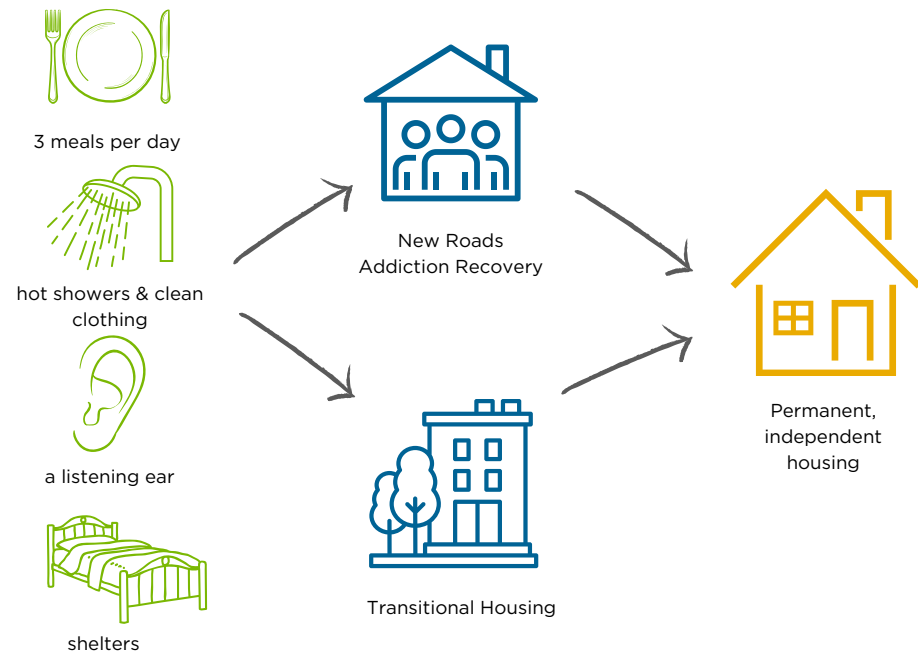
- 1 year of recognition on Our Place Society's website.
- 2025/2026 Our Place Supporter Badge.
- Invitation to exclusive Our Place events.

Display your Our Place Support with pride!

Your Supporter Badge is suitable for display on your Corporate Responsibility Report, website, social media, e-signature, and more!



Together, we can strengthen our community and create meaningful opportunities by empowering individuals to move forward with dignity and purpose.



Our Place Continuum of Care

Our Place first supports basic needs of food, shelter, hygiene, medical care, and community. Once these needs are met, Our Place family members can access referrals to supportive housing or addiction recovery before transitioning to permanent housing.

This support makes all the difference to long-term success.

To discuss partnership opportunities please contact:

Rachel Hesketh
Cell: 204-930-0225
rachelh@ourplacesociety.com